

Tower configurations based on 115 mph wind speeds, out of service and 45 mph in service.




2-Part Line

| Hook Radius 11'-6" (Min.) | AVAILABLE JIB LENGTHS IN FEET | | | | |
|------------------------------------|-------------------------------|---------------|---------------|----------------|--------------|
| | L5 164'-0" | L4 147'-8" | L3 131'-3" | L2 114'-10" | L1 95'-2" |
| 43'-0" | 8,820 | 8,820 | 8,820 | 8,820 | 8,820 |
| 47'-7" | 8,820 | 8,820 | 8,820 | 8,820 | 8,820 |
| 50'-6" | 8,820 | 8,820 | 8,820 | 8,820 | 8,820 |
| 53'-10" | 8,820 | 8,820 | 8,820 | 8,820 | 8,820 |
| 56'-9" | 8,820 | 8,820 | 8,820 | 8,820 | 8,820 |
| 65'-7" | 8,820 | 8,820 | 8,820 | 8,820 | 8,820 |
| 72'-2" | 8,820 | 8,820 | 8,820 | 8,820 | 8,820 |
| 82'-0" | 8,350 | 8,820 | 8,820 | 8,820 | 8,820 |
| 91'-10" | 7,270 | 8,260 | 8,820 | 8,820 | 8,820 |
| 95'-2" | 6,970 | 7,920 | 8,450 | 8,820 | 8,820 |
| 98'-5" | 6,680 | 7,600 | 8,110 | 8,740 | |
| 105'-0" | 6,180 | 7,030 | 7,500 | 8,100 | |
| 114'-10" | 5,530 | 6,300 | 6,740 | 7,270 | |
| 124'-8" | 4,990 | 5,700 | 6,100 | | |
| 131'-3" | 4,680 | 5,350 | 5,730 | | |
| 137'-10" | 4,400 | 5,040 | | | |
| 147'-8" | 4,040 | 4,630 | | | |
| 157'-6" | 3,720 | | | | |
| 164'-0" | 3,530 | | | | |



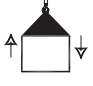





4-Part Line

| Hook Radius 11'-6" (Min.) | AVAILABLE JIB LENGTHS IN FEET | | | | |
|------------------------------------|-------------------------------|---------------|---------------|----------------|--------------|
| | L5 164'-0" | L4 147'-8" | L3 131'-3" | L2 114'-10" | L1 95'-2" |
| 43'-0" | 17,640 | 17,640 | 17,640 | 17,640 | 17,640 |
| 47'-7" | 16,210 | 17,640 | 17,640 | 17,640 | 17,640 |
| 50'-6" | 14,390 | 16,430 | 17,640 | 17,640 | 17,640 |
| 53'-10" | 13,280 | 15,160 | 16,260 | 17,640 | 17,640 |
| 56'-9" | 12,430 | 14,200 | 15,230 | 16,480 | 17,640 |
| 65'-7" | 10,360 | 11,800 | 12,680 | 13,780 | 14,770 |
| 72'-2" | 9,260 | 10,580 | 11,350 | 12,350 | 13,230 |
| 82'-0" | 7,830 | 9,040 | 9,700 | 10,470 | 11,240 |
| 91'-10" | 6,830 | 6,830 | 8,490 | 9,260 | 9,920 |
| 95'-2" | 6,570 | 7,560 | 8,140 | 8,830 | 9,480 |
| 98'-5" | 6,280 | 7,280 | 7,830 | 8,490 | |
| 105'-0" | 5,840 | 6,720 | 7,230 | 7,940 | |
| 114'-10" | 5,180 | 5,950 | 6,500 | 7,060 | |
| 124'-8" | 4,630 | 5,400 | 5,840 | | |
| 131'-3" | 4,410 | 5,070 | 5,510 | | |
| 137'-10" | 4,190 | 4,850 | | | |
| 147'-8" | 3,750 | 4,410 | | | |
| 157'-6" | 3,530 | | | | |
| 164'-0" | 3,310 | | | | |

Dimensions and Weights

| ITEM | ILLUSTRATION | LENGTH | WIDTH | HEIGHT | WEIGHT lbs. |
|----------------|---|--------|-------|--------|----------------|
| Climbing Tower |  | 8'-2" | 3'-3" | 3'-3" | 1,084 |
| Operator Cabin |  | 8'-6" | 3'-7" | 7'-6" | 1,250 |
| Ballast Weight |  | 9'-10" | 4'-8" | 1'-2" | 4,488 |

Speeds

| | | | | | | |
|---|---|---|-------|---|--------|-------------------------------------|
| TROLLEY |  | 0 to 246 fpm | | | | 1 x 5.4 HP / 1 x 4 kW |
| SWING |  | 0 to 0.8 rpm | | | | 1 x 7.5 HP / 1 x 5.5 kW |
| STANDARD HOIST UNIT |  |  fpm lbs | |  fpm lbs | | 1 x 32.6 HP / 1 x 24 kW |
|  | | 197 | 4,410 | 98 | 8,820 | |
|  | | 131 | 6,610 | 66 | 13,230 | Total motors output approx. 45.5 HP |
|  | | 98 | 8,820 | 49 | 17,640 | Connected Power 40 kVA |

Measured under nominal load at the turntable of the tower crane. Speeds and power calculated using 480 VAC @ 60 Hertz.

Power Requirements

Power supply: 3-phase 480 V, 60 Hz; 3-wire plus ground; no Neutral.

480 V phase-phase, 277 V each phase to ground with 120° phase shift between phases.

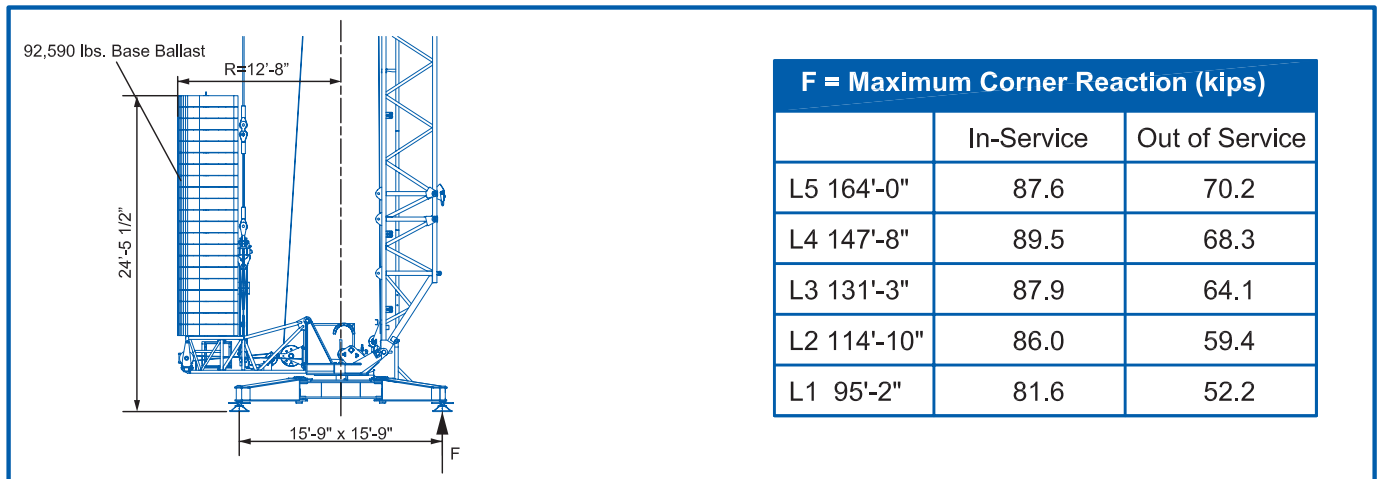
Service size: 75 Amperes

NOTES:

1. For electric power provided by an electric utility, do not use open Delta transformers.
2. For electric power provided by a generator, the minimum generator size required is 70kW. A properly sized generator is critical to the safe operation of the crane.

Information contained in this specification sheet is of a general nature. Operator's manual should be consulted and adhered to.

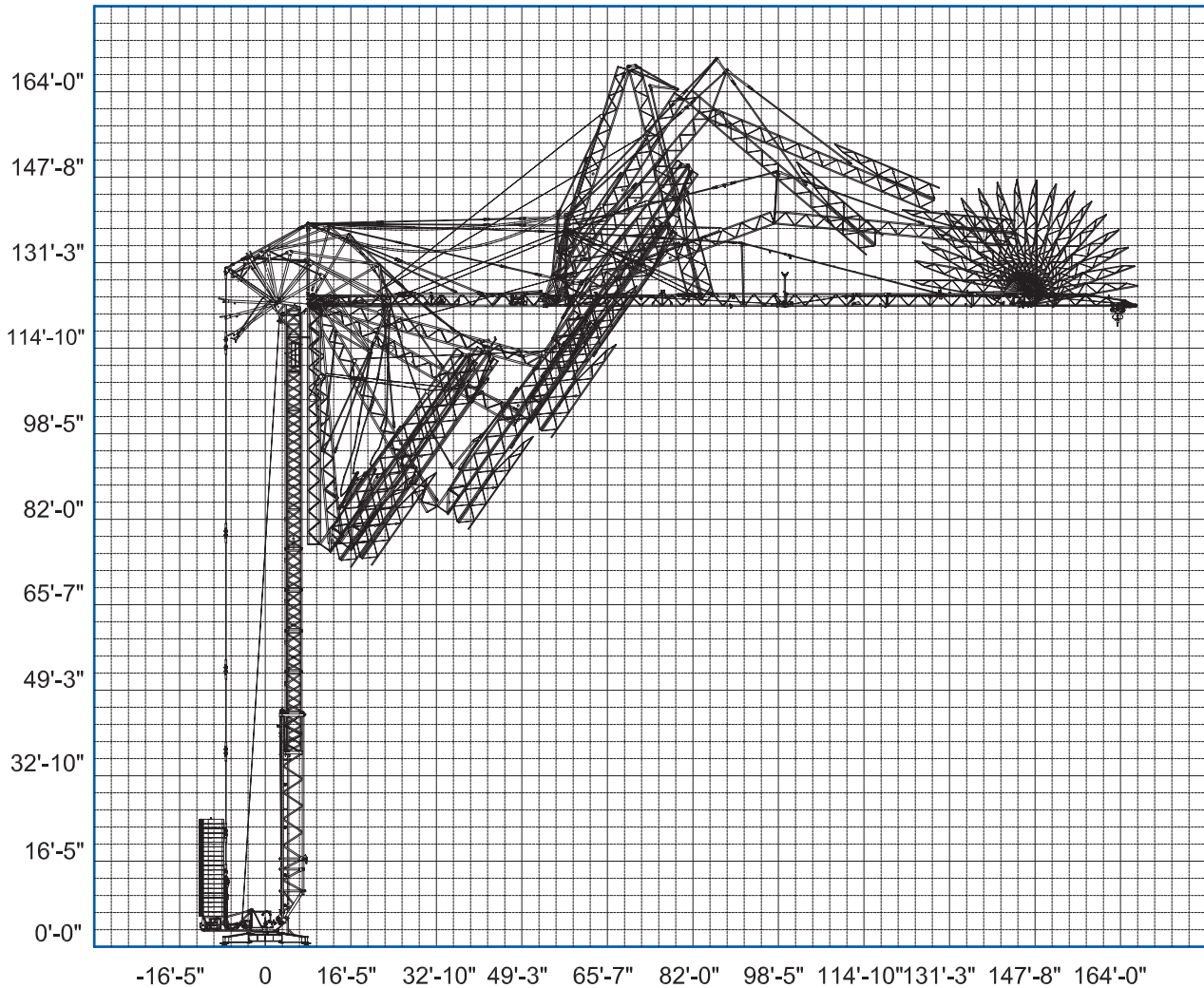
Reaction Forces



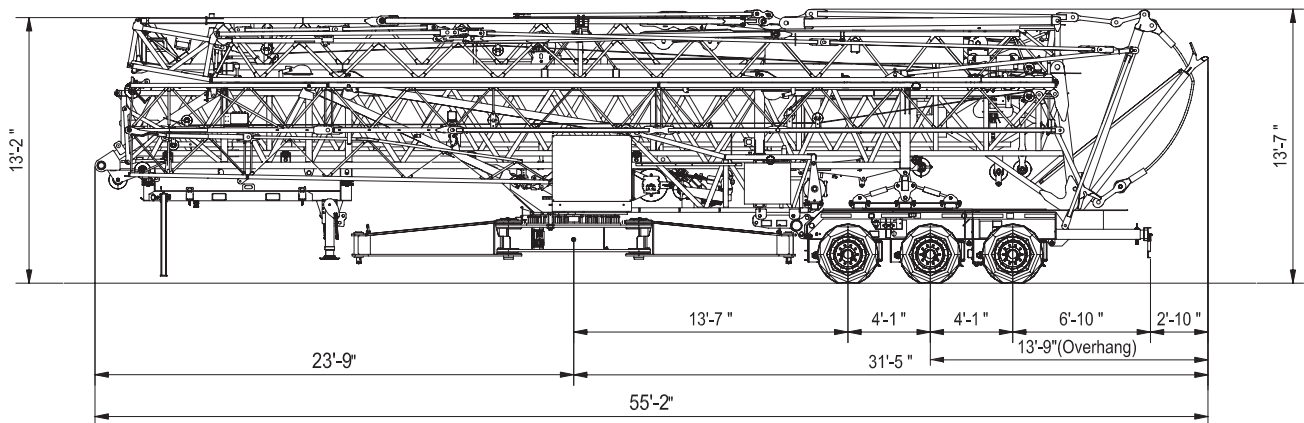
Warning

1. The operator must read and understand the owner's manual before operating this crane.
2. Practical working loads depend on supporting surface, wind, and other factors affecting stability such as hazardous surroundings, experience of personnel, and proper handling, all of which must be taken into account by the operator.

Space Requirements



Transport Dimensions & Weights



Chassis Data

Overall Length
(in transport position) 55'-2"

Overhang
(in transport position) 13'-9"

Overall Height
(in transport position) 13'-7"

Overall Width
(in transport position) 8'-6"

Weights

Crane
w/o Counterweight & Axles. 57,320 lbs.

Crane Counterweight 92,590 lbs.
(21 x 4,405 lbs.)

Crane w/ Counterweight 152,110 lbs.

Crane in Transport 68,120 lbs.

Kingpin Load on Truck 26,530 lbs.

Rear (drive) Axles 41,590 lbs.
(13,865 lbs./Axle)